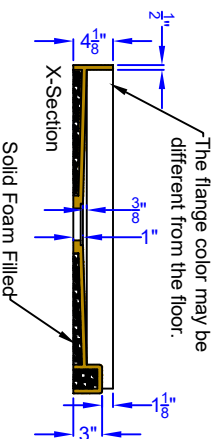
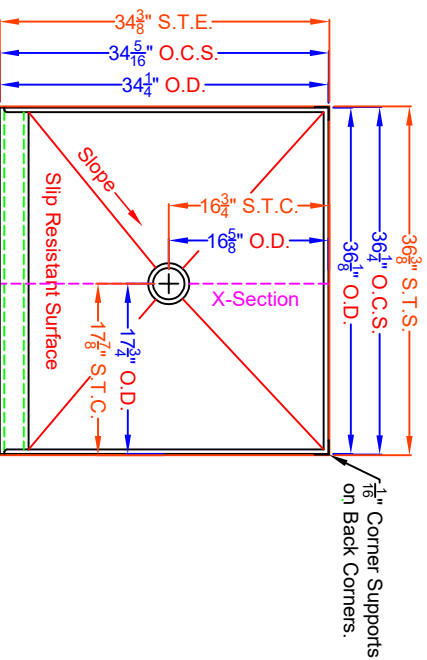
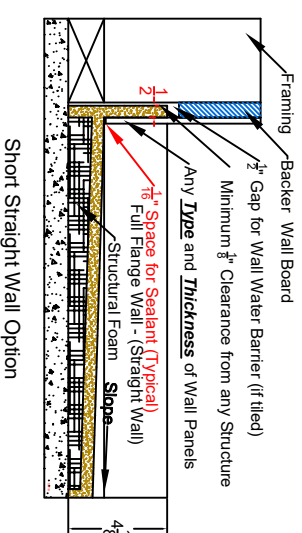
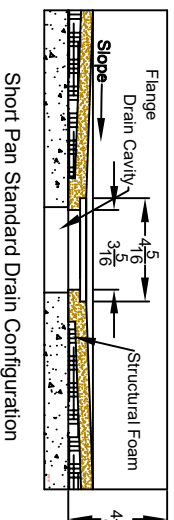
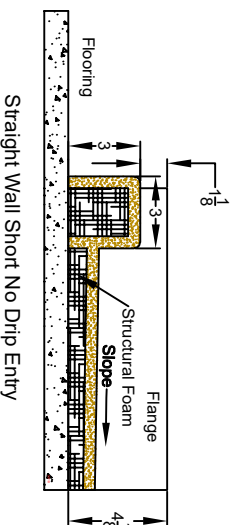


# GRIFform INNOVATIONS®

## Customer Approval Drawing



### Details (See Below)



Note: This pan is designed for 3/8\"/>

- Labeling Identification**
- S.T.S. = Stud To Stud
  - S.T.E = Stud To Entry
  - S.T.C. = Stud To Center of Drain
  - O.C.S. = Outside Corner Supports
  - O.D. = Outside Dimension

Please verify and sign that all information is correct.

Your Company Name: \_\_\_\_\_

Print Name: \_\_\_\_\_

Sign Name: \_\_\_\_\_ Date: \_\_\_\_\_

### Custom Shower Pan

Shape 651, Standard No Drip Entry, Straight Wall, Standard Drain, Slip Resistant Finish

SUBMITTAL:	IDENTIFIER:	MATERIAL:	COLOR:	UNIT QUANTITY:	PAGE
30211	ROOM #101	CORIAN	GLACIER WHITE	1	1/1

The following is the property of GRIFform INNOVATIONS® or its subsidiaries, without written consent for reproduction or any use except that which is authorized for the product. GRIFform INNOVATIONS®

GRIFform INNOVATIONS® Inc. will work to provide our customers with products that meet or exceed their expectations. By accepting our products, you agree to our terms and conditions of sale. We warrant our products against defects in materials and workmanship for a period of 12 months from the date of installation. We do not warrant against damage caused by misuse, improper installation, or other factors beyond our control. We warrant our products against defects in materials and workmanship for a period of 12 months from the date of installation. We do not warrant against damage caused by misuse, improper installation, or other factors beyond our control.